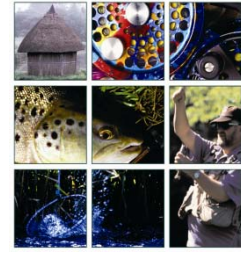


APRIL FISHING ADVICE

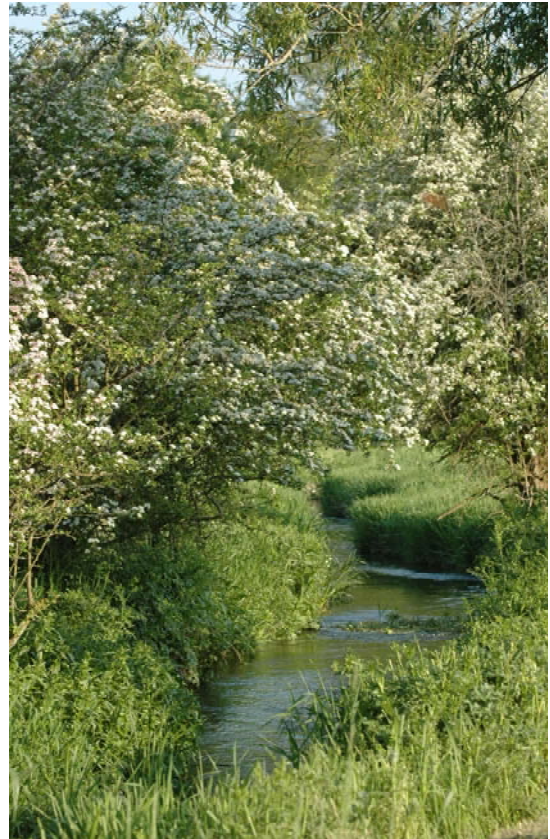


TACTICS

April days are always full of excitement as the new season starts; you are straining at the leash after months of confinement and there are new rods, lines, flies and assorted kit to be tried out for the first time.

It is difficult not to let your mood, and by association your fishing tactics, be dictated by the weather that prevails on the day. On a sunny, spring day the river will look alive; on a gloomy, rainy day as dead as a door nail. But it is worth reminding ourselves that for the fish the water temperature, flow and insect activity changes very little from day to day.

For the early season angler it is cold winds that are the killer, especially when from the north or east. On days like this fish nymphs well down in the water or seek out sheltered spots. On better days wait for the temperature to rise around mid-morning and have Large Dark Olive patterns ready for the hatch or fish a Pheasant Tail Nymph just beneath the surface.



Hawthorn bush in flower

WEATHER

There seems to be no middle ground in April – the days are positively spring-like or as gloomy as can be, but it is the wind that is your enemy. A cold north or east wind will kill off any hatches as it chills down the surface film, sending any emerging nymphs back down to wait another day.

TACKLE TIPS

Not everyone approves of strike indicators but in choppy, dark water and at the start of the season when reactions are still slow (!) they are a great boon.



HATCHES

These are the four main groups to be found on the chalkstreams during April:

Large Dark Olive

This is the predominate hatch for the month and the default fly to fish if you are not certain what to try.

Nymph	Pheasant Tail Nymph	size	14
Emerger	JG Emerger		14
Dun	Kite's Imperial		14



JG Emerger

Grannom

One of the two speciality hatches this month. This member of the sedge family will hatch for 10-14 days in great abundance, though the hatches may be very localised.

Grannom 14



Grannom

Hawthorn

The second speciality hatch, usually appearing for two weeks starting in the last week of April.

Hawthorn	12-14
Black Gnat	16-18



Hawthorn

Shrimp

These are the commonest creatures that trout eat; if you see a trout turn on their sides and 'wiggle' along they are dislodging shrimps from the gravel bed.

Green or Pink shrimp	12-14
Sawyer's Killer Bug	14



Green shrimp



Dark Olive



Freshwater Shrimp



Grannom



Hawthorn